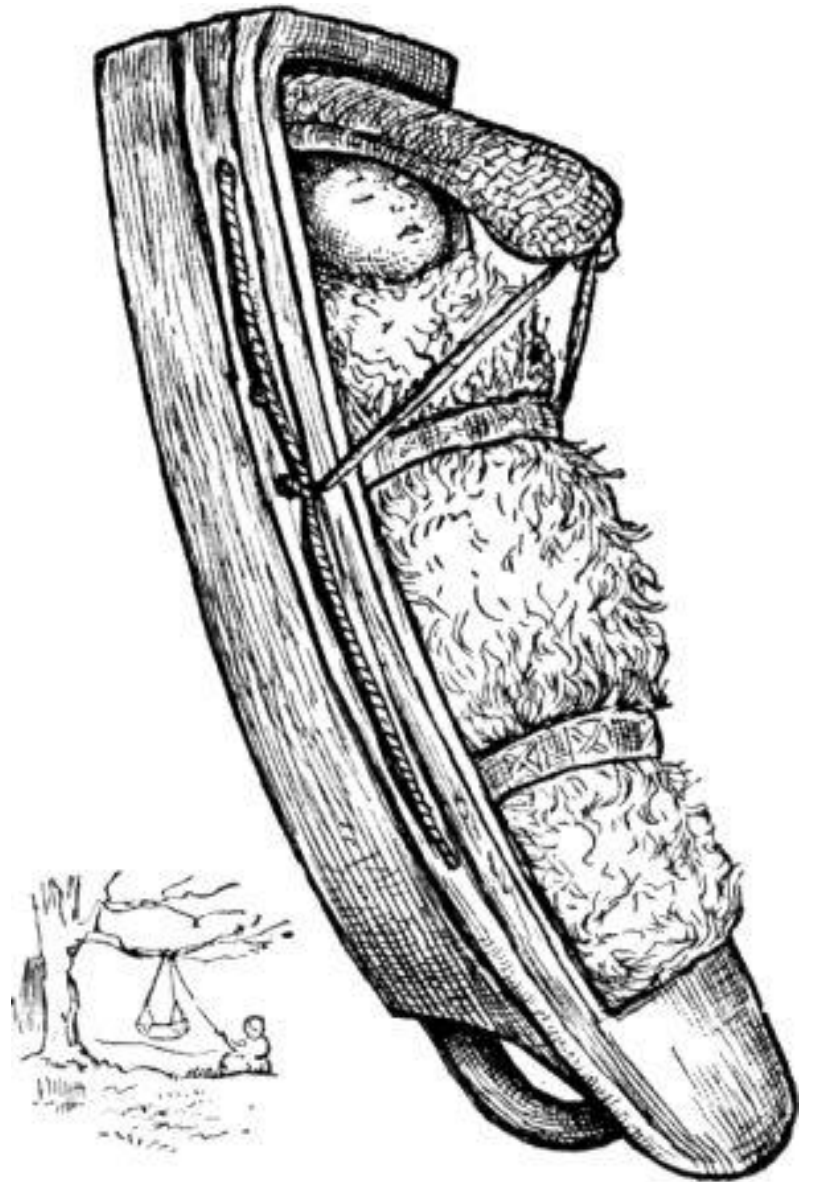


Everyday Life - Northwest Coastal Indian Children

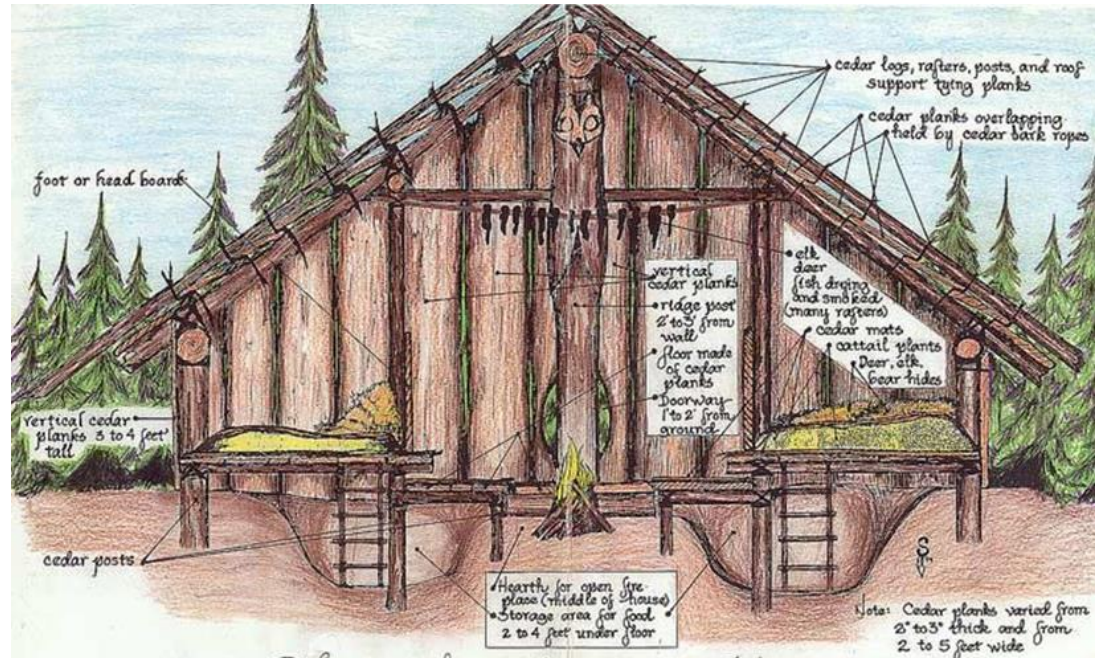
- Babies were rejoiced, and had ceremonies welcoming them.
- For the first few years of a child life they were swaddled for most of the day, never moving.
- It was thought “attractive” to have a flat forehead, so parents would tie a board to their foreheads for the first year of their lives.
- Children played tag, hide and seek, and hoop and spear.
- Children were taught that winning wasn't important, since everything had its place in life.



What Did the Northwest Coastal Indians Live In?

- The Northwest Coastal Indians mostly lived in plank houses.
- They are square family houses that have a sunken 5 foot square in the middle for the fire.
- They used the huge redwood and cedar trees as posts and beams for the house. These became totem poles.
- They used no nails or rope, but the logs fit together like a tight puzzle.





Chinook Native House



How did the Northwest Coastal Indians travel?

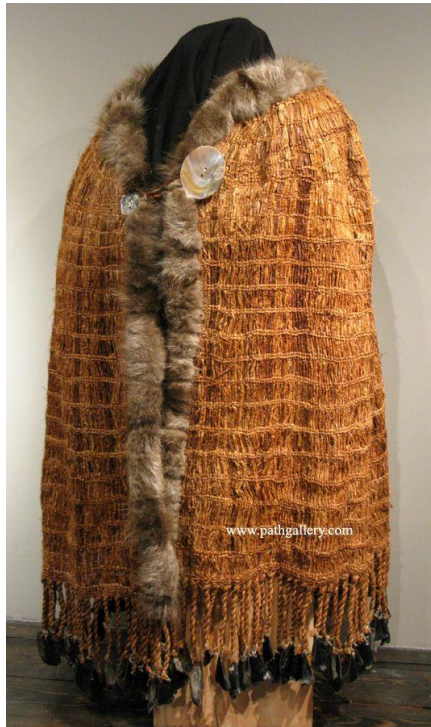
- Everyone made and used boats with paddles. These boats were made from fallen cedar or redwood trees.
- **The Northwest Indians were the first to make kayaks.** It was a waterproof way to travel.
- **The Northwest Coastal Indians were a trading community.** They would travel the ancient paths to the Bering Strait.
- This is why the Coastal Indians have some Asian influences in their crafts.



Northwest Coastal Fashion

- The Northwest Coastal Indians wore cloaks or robes made from cedar bark, otter fur or dog fur.
- They often went barefoot, since moccasins would get too wet with the damp weather.
- Tattoos were very common. They would rub soot or grasses into the tattoo to make colors.
- Winter coats and boots were made out of seal skins and caribou furs.





Potlatches

- The Northwest Coastal Indians believed in the redistribution of wealth.
 - This means the sharing of items amongst everyone.
- Several families would gather together and share food, crafts and other material things.
- Potlatches were done mostly in winters, since there wasn't much else to do.
- Potlatches were great festivals, and were sometimes planned for an entire year.
 - Potlatch is a Chinook Indian term meaning, “to give away”
- When the white man came, white men banned it since they thought it was uncivilized and useless.

Student Turn & Talk

- *If we had a Potlatch here at DAS, what kinds of things would YOU give away to share with others?*
- *Why do you think Potlatches were important to native tribes?*
- **We will share out as a class in a few moments.**

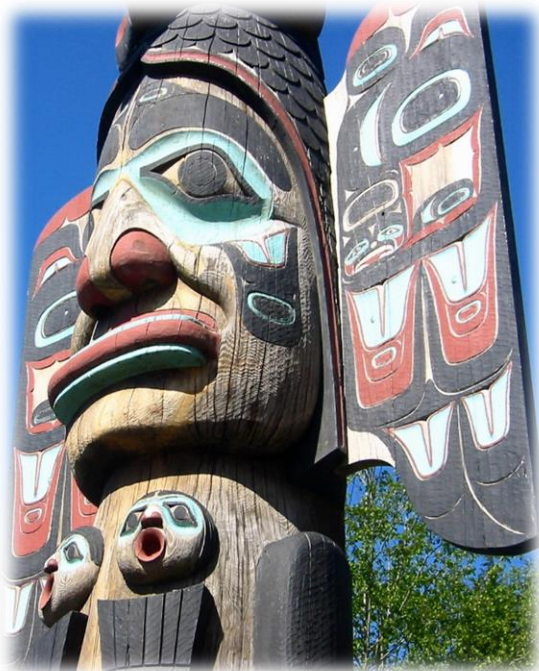
Potlatches



Totem Poles

Totem Poles were a common part of most native cultures in the Northwest. They were used in a variety of ways, including representation of a family tree. It could also be used for telling legends, history, or stories of specific events.

legends



lineages



history



events



Totem Poles

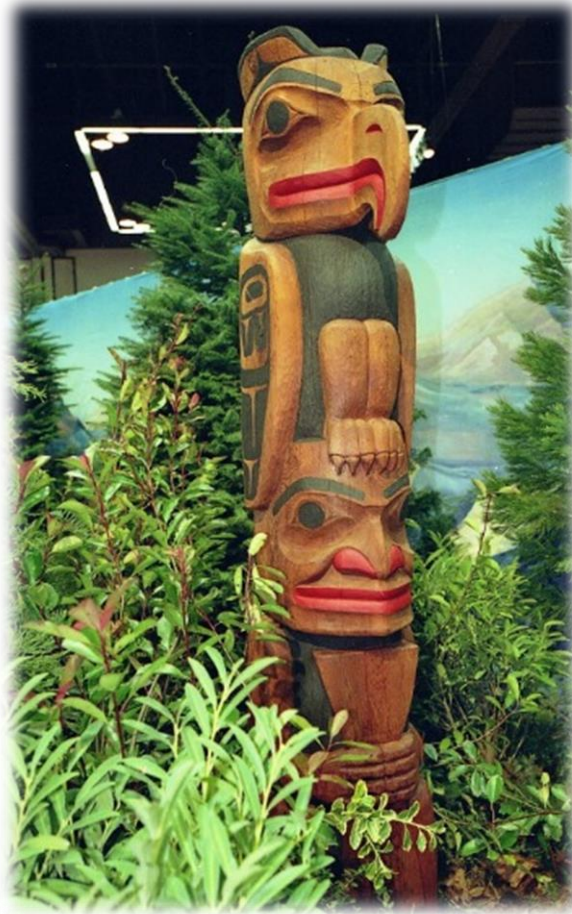


- Totem pole carvers were seen as the master carvers in the community. They had to go through an apprenticeship before doing any poles.
- It would take 100 men to carry and make a totem pole stand upright!
- There would be ceremonies and dances to inspire the carver before starting, and once again when he finished.



Native Americans: Northwest

Totem Poles from the Haida are known for always having the family crest on the top. For example, the top symbol would be an eagle for the eagle family or a raven for the raven family.



Totem Poles



<https://www.youtube.com/watch?v=NYk5syyz0a4>

Native Americans: Northwest

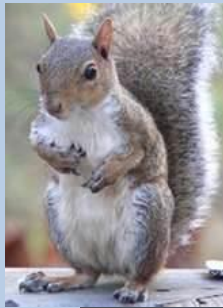
Another type of Totem Pole is called a *shame pole*.

These were used as a public symbol to shame groups or individuals who had unpaid debts or favors.



Animals that are associated with human personalities.

- **Eagle:** watches over things, is protective
- **Fox:** sneaky or clever
- **Monkey:** silly
- **Dog:** loving and loyal
- **Lion:** brave
- **Mice:** quiet
- **Squirrel:** hyper, thrifty
- **Owl:** smart or wise
- **Swan:** beautiful, graceful
- **Ox:** strong



The word **totem** comes from the Ojibwe word, *odoodem*, which means "his kinship group."



- **Kinship means family.**
- Today we will be making our own totem poles that will show important people in our lives that we are thankful for.
- You can represent these important people by drawing them in human or animal form.
- Many animals represent human personality traits.

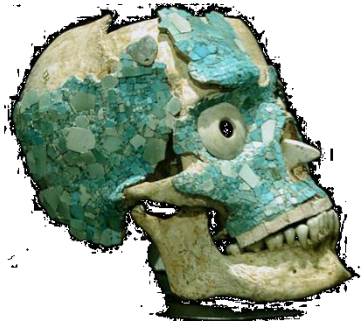
Make each totem mean something to you.



- Step 1: Pick the four people you want to represent on your totem pole.
- Step 2: Decide how you are going to represent them. Are you going to make them into an animal? Or are you going to draw their face with lots of expression to represent what kind of person they are. Such as happy, sad, funny, or excited.
- Step 3: Write who each totem is and why you drew them the way you did.
- Step 4: Draw each person as either a face or an animal.
- Step 5: Cut and glue your totem pole to your writing.

Guess *the* Artifact

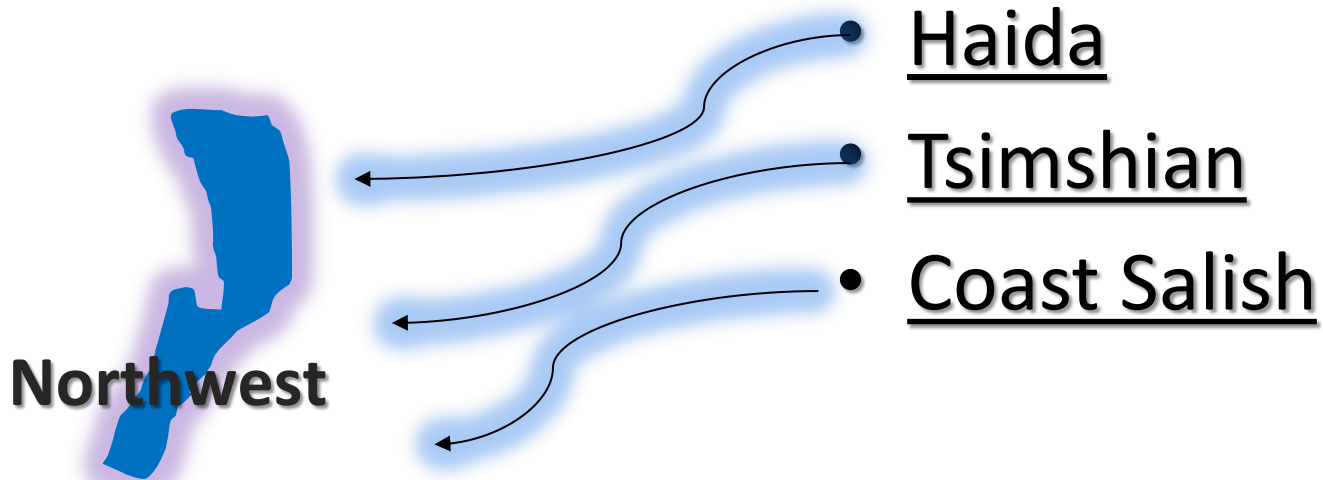
The Indians of the Northwest



Northwest

Guess *the* Artifact **Northwest**

This series will focus on artifacts from Native American tribes of the **Northwest** cultural region, such as:



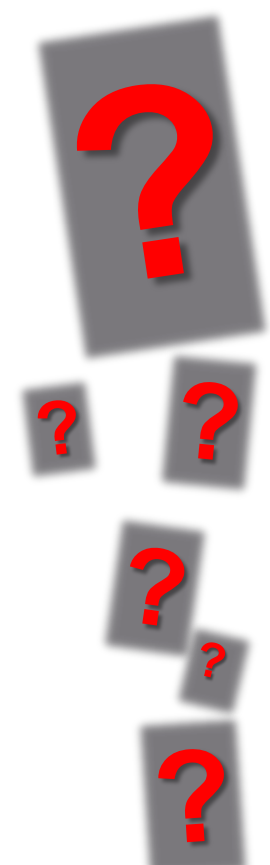
Northwest

Guess *the* Artifact

Northwest

Hint: to wear

Answer: woven spruce hat



Northwest

Guess *the* Artifact Northwest

Hint: used to eat with

Answer: spoon made from a horn



?

?

?

?

?

?

?

?

?

?

?

Northwest **Guess the Artifact** Northwest

Hint: an article of clothing

Answer: woven robe



Haida



Northwest

Guess *the* Artifact

Northwest

Hint: hungry?

Answer: Haida wooden food bowl



?

?

?

?

?

?

?

?

?

?

?

Northwest **Guess the Artifact** Northwest

Hint: made from a single piece of wood

**Answer: dug-out canoe
(and tools for digging it out)**



Northwest **Guess the Artifact** Northwest

Hint: goin' fishin'

Answer: Haida fish hooks



Hint: "get inked"

Answer: Haida tattooing kit

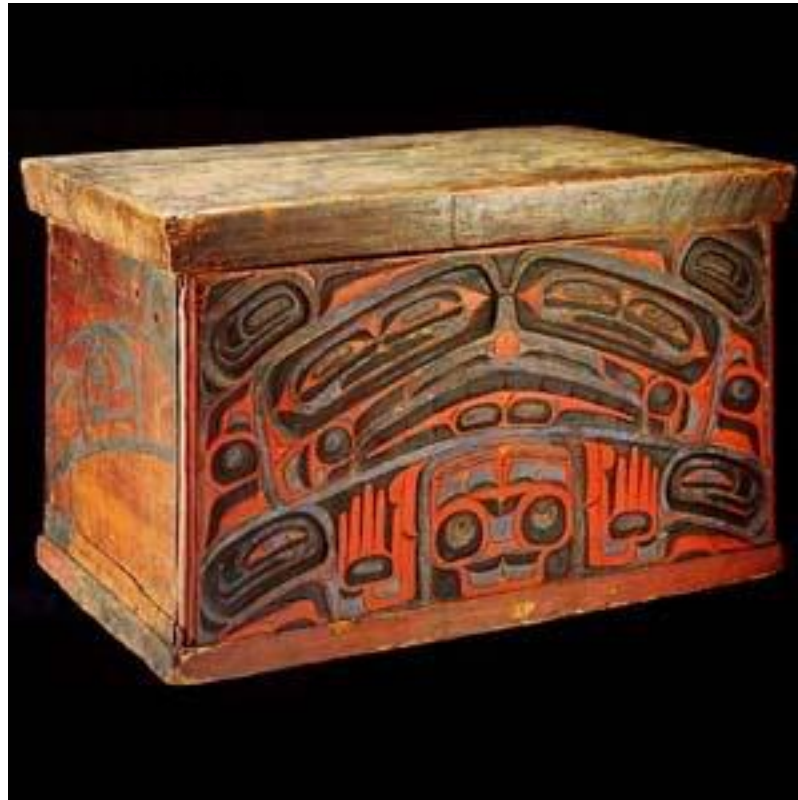


Northwest

Guess *the* Artifact Northwest

Hint: hollow

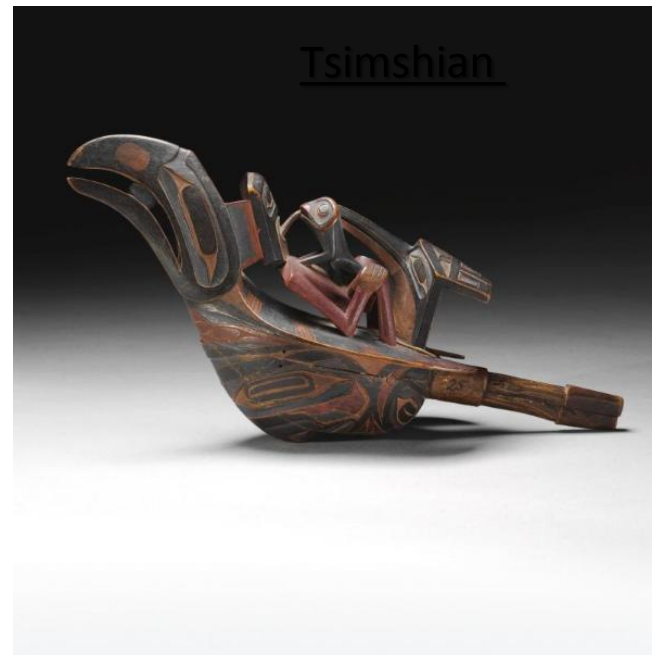
Answer: carved red cedar box with top



Northwest **Guess the Artifact** Northwest

Hint: loud

Answer: Shaman's rattles



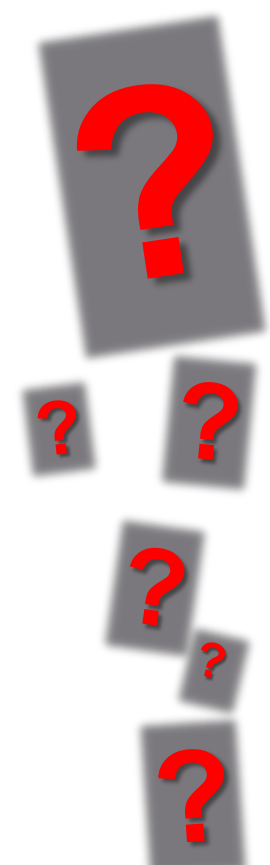
Northwest

Guess *the* Artifact

Northwest

Hint: grooming tool

Answer: Tsimshian wood comb



Northwest **Guess the Artifact** Northwest

Hint: for adult recreational activities

Answer: pipe



Northwest

Guess *the* Artifact

Northwest

Hint: watch out, whale!

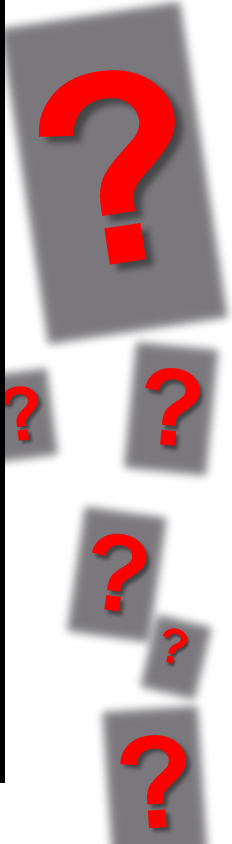
Answer: harpoons



Coast Salish



Courtesy National Museum of the American Indian, Smithsonian Institution



Northwest **Guess the Artifact** Northwest

Hint: essential for fishing

Answer: weights or “sinkers”



Northwest

Guess *the* Artifact

Northwest

Hint: famous symbol from natives of this cultural region

Answer: totem pole

